

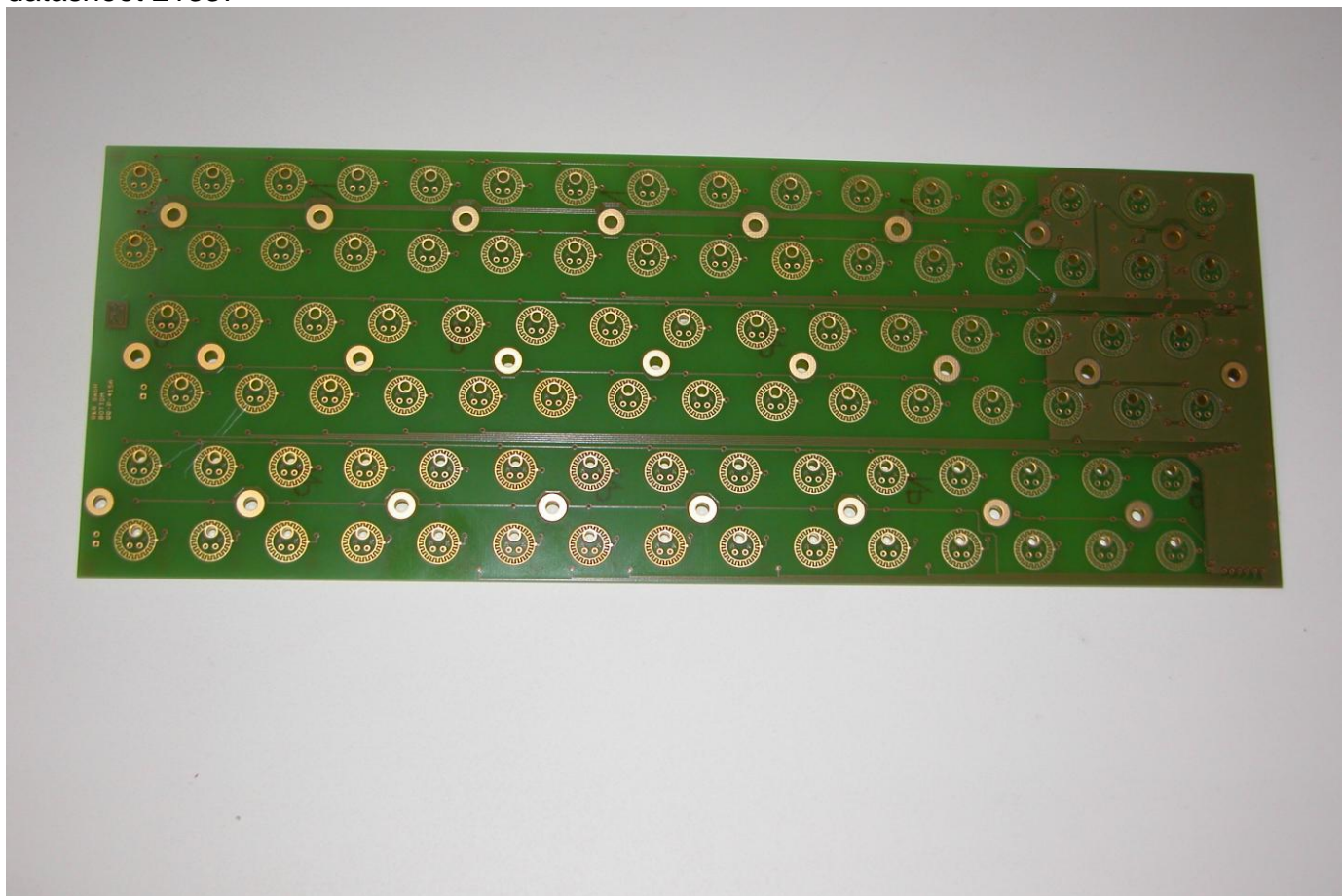


R&R stainless steel keyboard IKV6W95L – for harsh environment Industry quality

housing	Add –on housing for industrial pc 122 or montior IM158 ... Gehäuse Aluminium oder Edelstahl
Material	Stainless steel or aluminium anodized
Layout	92 pushbuttons
Keys	R&R pushbuttons V6 label stainless steel or aluminium anodized inscription engraved sealed contac, sealed guiding
Protection class	IP 65 dustproof, waterproof
Actuation force	1N or 2N
Travel	1.2mm
Lifetime	nominal 2 million switch cycles
Interface	PS2 or USB
Option	Night-design with R&R pushbutton LT4FM

PCB RR-P-415
datasheet 21337

92 keys type Typ V6 or Typ LT4FM



Controller RR-P-421
interface PS/2
DNR 19122

...

