

R&R Industrie-PC IPC96

Gehäuse

Aluminium natur eloxiert

Kartenbefestigung mit Niederhalter

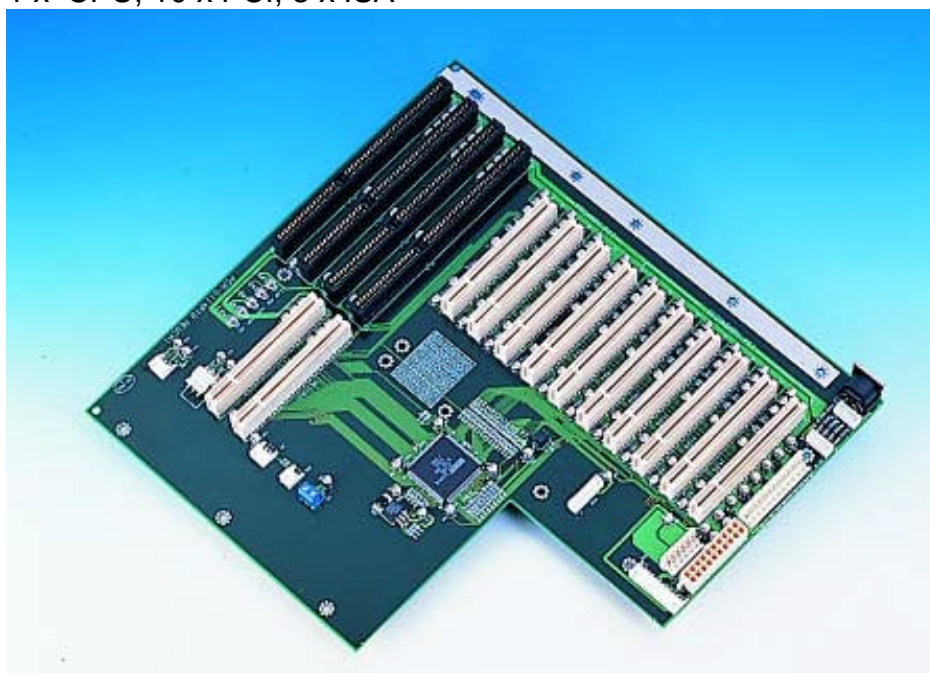
Festplattenkorb mit schwingungsgedämpfter Aufhängung

(BxHxT)

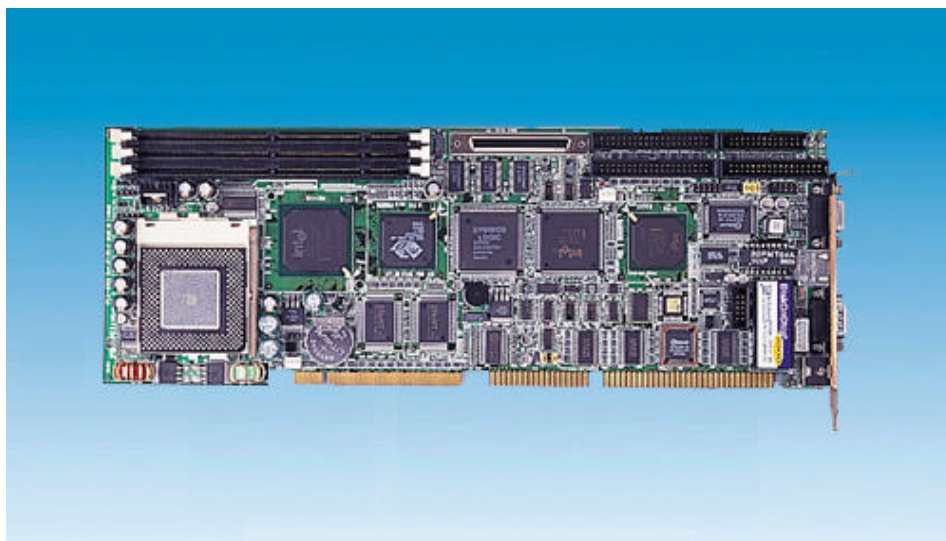
Ca. 600 x 420 x 250 mm

Passive Backplane

1 x CPU, 10 x PCI, 3 x ISA



Slot-CPU 6168

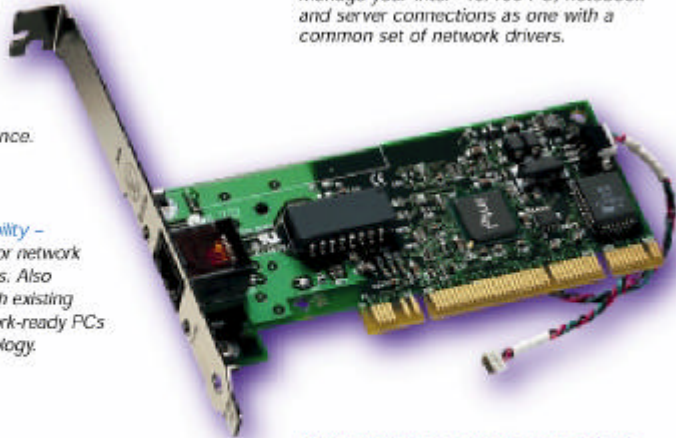


Features	Pentium® Celeron™ Socket 370 architecture
CPU	Intel® Celeron™ processor up to 500 MHz
2nd level cache	128 KB on-chip cache
Chipset	Intel® 82440BX
BIOS	Award Flash BIOS 2 M-bit
Bus interface	PCI/ISA bus, PICMG compliant
RAM	Up to 768 MB in three available 168-pin DIMM sockets. Supports SDRAM and ECC
LAN (optional)	Supports 10/100Base-T Ethernet networking Controller: Intel® 82558 chipset
VGA/AGP (optional)	Supports AGP 2X, 133 MHz; on-board 4 MB SGRAM Controller: ATI 3D Rage Pro
PCI SCSI (optional)	Supports 32-bit PCI interface and Ultra II SCSI or legacy single-ended devices; data transfer rates up to 80 MB/sec Chipset: SYM BIOS 53C895
HISA	ISA High Drive up to 64 mA
SSD	Supports M-Systems' DOC® 2000 Flash disk up to 144 MB
Floppy disk drive interface	Supports up to two floppy disk drives. BIOS enabled/disabled. Also supports Japanese "Floppy 3" mode
PCI enhanced IDE interface	Supports up to four IDE (AT bus) large (up to 8.4 GB) hard disk drives or other enhanced IDE devices. Supports PIO Mode 4 and Ultra DMA/33. BIOS enabled/disabled
Enhanced parallel port	Configurable to LPT1, LPT2, LPT3 or disabled. Supports SPP/EPP/ECP
Serial ports	Two RS-232 ports with 16C550 UARTs (or compatible) with 16-byte FIFO buffer. Supports speeds up to 115.2 Kbps. Ports can be individually configured to COM1, COM2 or disabled
Keyboard and PS/2 mouse connector	A 6-pin mini-DIN connector is located on the mounting bracket for easy connection to a keyboard or PS/2 mouse. An on-board keyboard pin header connector is also available
Watchdog timer	Can generate a system reset or IRQ11. The watchdog timer is programmable, with each unit equal to one second (63 levels)
Operating temperature	0 ~ 60° C (32 ~ 140° F)
Power supply voltage	+5 V, +/-12 V
Board size	338 x 122 mm (13.3" x 4.8")

Netzwerkkarten 2x Intel Pro 100+

*Leading performance -
Uses Intel's latest high
performance chip
technology and Intel®
Adaptive Technology
to increase network
response time and
maintain peak performance.*

*Widespread compatibility -
Interoperable with all major network
and PC operating systems. Also
backward-compatible with existing
Intel® adapters and network-ready PCs
with Fast Ethernet technology.*

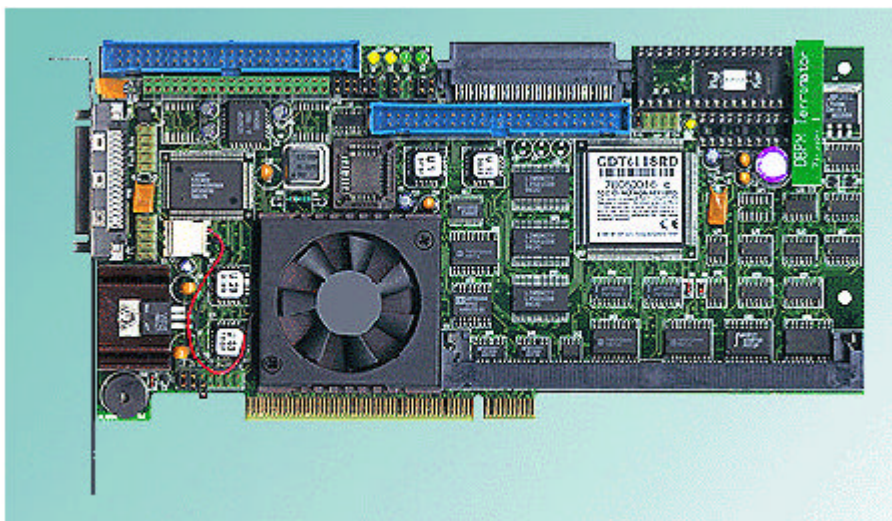


*Intel® SingleDriver™ technology -
Manage your Intel® 10/100 PC, notebook
and server connections as one with a
common set of network drivers.*

*Advanced management capabilities -
Wired for Management (WfM) 2.0 support, Wake
on LAN®, Intel® Boot Agent, Desktop Management
Interface (DMI) 2.0, Tivoli® agents and Intel®
LANDesk® Client Manager software included,
ACPI compliant, Intel® PROSet Utility.*

SPECIFICATIONS		Intel® Management Adapters	
	Intel® PRO/100 S Management Adapter	Intel® PRO/100+ Management Adapter	
IEEE STANDARD/NETWORK TOPOLOGY	10BASE-T, 100BASE-TX	10BASE-T, 100BASE-TX	
WIRING AND CONNECTORS	Cat5, 2pr; RJ-45	Cat5, 2pr; RJ-45	
PRODUCT CODE:	PILA8464B (DES) PILA8464BUS (3DES)*	PILA8460B	
ADAPTER PRODUCT FEATURES			
Intel® Adaptive Technology	■	■	
Intel® SingleDriver™ Technology	■	■	
Automatic Driver Installation	■	■	
Plug and Play Specification Support	Standard	Standard	
Full-duplex Capable	■	■	
Auto-negotiation	■	■	
Easy Installation, Intel® PROSet Utility	■	■	
NETWORK MANAGEMENT			
WMI Baseline v2.0	■	■	
DMI 2.0 Support, WMI and SNMP-manageable	■	■	
Offline Diagnostics	■	■	
Intel® Boot Agent	■	■	
ACPI Power Management	■	■	
Wake on LAN*	■	■	
Intel® LANdesk Client Manager, Trivial Agent (Included)	■	■	
NOS SOFTWARE SUPPORT*			
Microsoft Windows® 2000	■	■	
Microsoft Windows NT® 3.51, 4.0	■	■	
Microsoft Windows® 95, 98	■	■	
Novell NetWare® 3.x, 4.11, 4.2 & 5	■	■	
SunSoft Solaris® 2.6, 7.0	■	■	
SCO UnixWare® 2.1.2, 2.1.3, 7	■	■	
Linux® 2.2.5 or Later	■	■	
ADVANCED SOFTWARE FEATURES			
802.1Q VLANs	■	■	
802.3x Flow Control	■	■	
TCP Checksum Offload	■	■	
Intel® Priority Packet, 802.1p	■	■	
Adaptive Performance Tuning	■	■	
TECHNICAL FEATURES			
Data Rate(s) Supported Per Port	10 & 100Mbps	10 & 100Mbps	
Onboard Memory	18KB cache	8KB cache	
Interrupt Levels	INTA	INTA	
IEEE Support	802.2 & 802.3	802.2 & 802.3	
Data Path Width	32-bit PCI	32-bit PCI	
Hardware Certifications	FCC B, CE	FCC B, CE	
Data Transfer Mode	Bus-master DMA	Bus-master DMA	
Controller - Processor	Intel® 82559C	Intel® 82559	
Power Requirement	380mA @+5VDC	134mA @+5VDC	
Operating Temperature	0-55°C	0-55°C	
Operating Humidity	85% at +55°C	85% at +55°C	
SECURITY FEATURES*			
IPSec Standard (Windows® 2000)	■		
Intel® 82594ED Encryption Co-processor Encryption*	■		
DES (56 bit)	PILA8464B		
3DES (168 bit)	PILA8464BUS		
	Availability subject to export regulations		
Authentication Algorithms			
SHA-1	■		
MD5	■		
Authentication Method			
Preshared Key	■		
Entrust/PKI*	■		
INTEL BACKING			
Limited Lifetime Warranty	■	■	
90-day Money-back Guarantee	■	■	

Raid-Controller GDT 6118RD



Ein-Kanal-Wide/Ultra2-SCSI-Disk-Array-Controller (RAID 0/1) mit Multiprozessor RISC Technologie, mit Intel i960RD® CPU mit 66MHz
Synchrone Datentransferrate bis zu 80MB/sec.
Bis zu 12 Meter Kabellänge im LVDS Betrieb. Ein zusätzlicher Narrow/Ultra SCSI Kanal für SE Geräte.
Cache-RAM von 4MB bis 128MB (ein 32/36 Bit PS/2 SIMM),
Data-Stripping (RAID 0),
Disk-Mirroring (RAID 1) und Disk-Chaining in Hardware auf Controller Ebene
3/4-lange PCI-Karte, Controller belegt nur einen 3/4 Slot
bis 22 SCSI-Geräte (am Wide/Ultra2 Kanal 15, am Narrow/Ultra Kanal 7) anschließbar,
Externer SCSI-UHD-Anschluß (für den Wide/Ultra2 SCSI Kanal), Duales Steckersystem.
Diagnose Tools: GDTMON (zeichenorientiert) und ICP RAID Navigator (GUI) mit Hot-Plug-Funktion,
GDTSETUP im Flash-RAM.
Optional als Aufrüstung: RAIDYNE zum Aufbau von RAID4/5/10 Systemen.
Optional als Aufrüstung: Cluster Modul für Clustering Systeme (setzt RAIDYNE voraus).
32 MB SIMM eingebaut

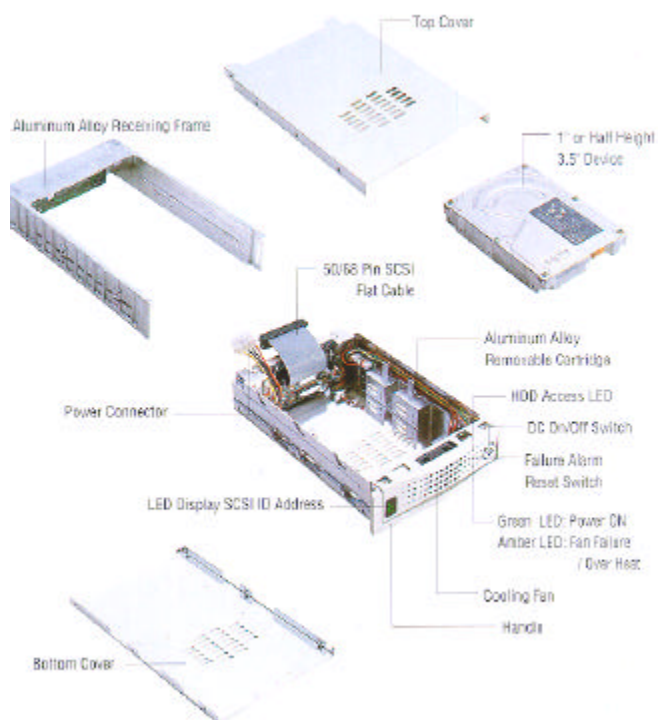
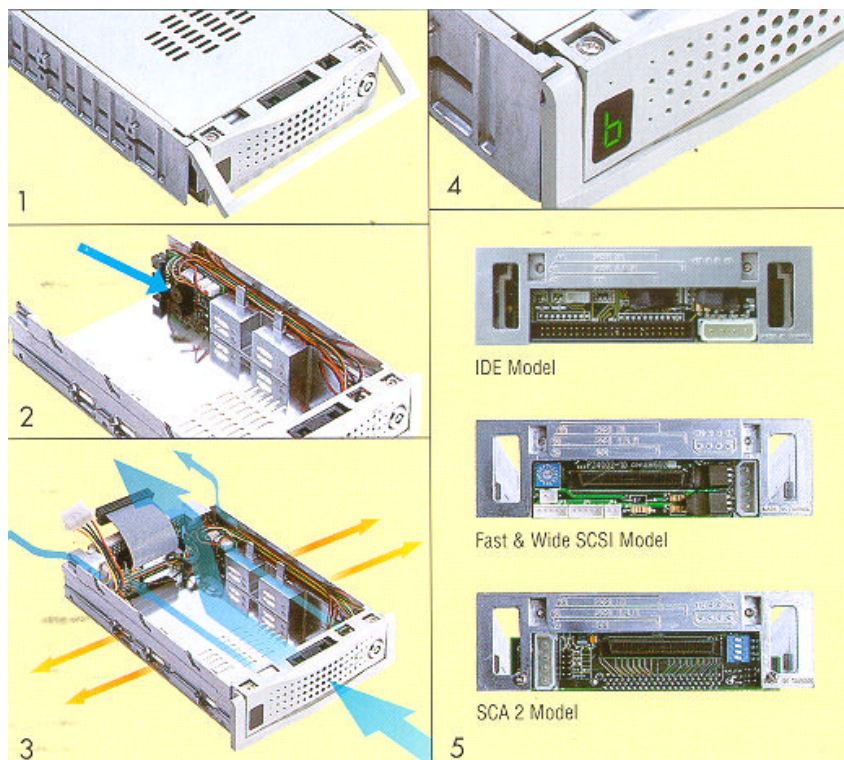
Festplatten

2 x 3.5" HDD
IBM Ultrastar 18ES 9,1 GB

Schnittstelle UWSCSI LVDS
Umdrehung 7200 U/min
Suchzeit 7,0 ms
Transferrate 80 MByte/s
Im Schnellwechselrahmen



Schnellwechselrahmen

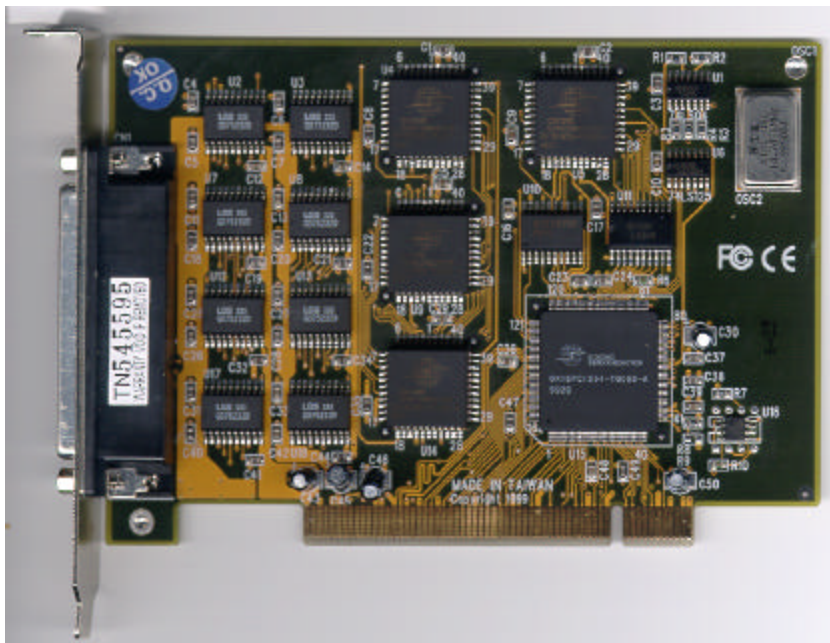


FDD
CD-ROM

1 x 1.44" TEAC Floppylaufwerk 1,44 MB weiß
1 x TEAC CD-ROM 40max Speed E-IDE

Serielle Schnittstellenkarte 8-fach

UART: 16C950, FIFO 128Bytes
 PCI Bus 2.2 Plug & Play; Speed 921kbps
 Emuliert: 16C550, 16C650, 16C750
 beliebige Baudraten programmierbar;
 Auto flow control
 Treiber & Betriebssysteme für VScOm PCI Karten:
 Treiber:
 Windows95/98; NT4.0;
 Windows 2000 Treiber
 In Entwicklung
 Die NT4.0 Treiber sind unter Windows 2000 funktionsfähig
 Linux OS/2 kompatibel



Anschlußbox 9polig

8-Port-RS232-Anschlussbox
 mit High-Density DSUB-62 Kabel,
 Länge 1m zum PC
 Anschlussbox mit 8 Steckern DSUB
 9 polig und Leuchtdioden für RX,TX



RS232C 9poliger Stecker

Pin	Belegung
1	CD
2	RXD
3	TXD
4	DTR
5	GND
6	DSR
7	RTS
8	CTS
9	RI

Anschlußbox 25polig

8-Port-RS232-Anschlußbox
mit High-Density DSUB-62 Kabel,
Länge 1m zum PC

Anschlußbox mit 8 Steckern DSUB
25 polig und Leuchtdioden für
RX,TX



RS232C 25poliger Stecker

PIN
2
3
4
5
6
7
8
20

Belegung
RX
TX
CTS
RTS
DTR
GND
DCD
DSR


RS422/485

über Umsetzer RR-P-285
siehe DNR 7593



Grafikkarte Vampower 10

PCI Grafikkarte für 2 TFT Displays mit LVDS-Schnittstelle
 Splitted desktop
 Grafikchip Rage Mobilty 128 von ATI



- Single component graphics subsystem
- Brings RAGE 128 PRO technology to Notebooks
- Supports two completely independent UXGA digital displays
- Improved visual quality 2D/3D rendering
- Enhanced TV-out – consumer electronics quality
- Comprehensive support for DirectX (including DX6 texture compression) and Open GL API's
- True 32-bit color support and improved 16-bit dithering
- ATI's innovative AES Power Management:
 - extends battery life
 - ACPI compliant
 - meets Intel Power Guidelines
- Supports Win9x, Win NT, Win2000 and other major OS's
- Family of four compatible devices

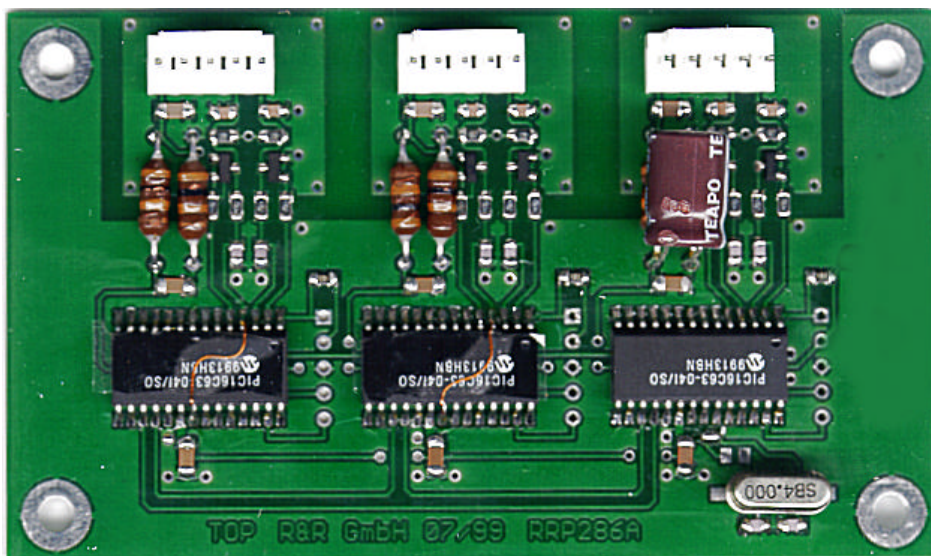
Available Display Modes VS Frame Buffer (Extreme Conditions)

AVAILABLE FRAME BUFFER MEMORY	CAPABLE RESOLUTIONS & COLOR DEPTHS		REQUIRED FRAME BUFFER MEMORY		
	CRTC#1	CRTC#2	CRTC#1		CRTC#2
			Single/Double Buffer	Triple Buffer	Single/Double Buffer
8MB	2D: 1600x1200x32	Not enabled	SB: 7.32MB	---	---
8MB	2D: 1400x1050x32	Not enabled	SB: 5.61MB	---	---
8MB	3D: 1280x1024x16	Not enabled	7.50MB ¹	---	---
8MB	3D: 1024x768x32	Not enabled	7.50MB ¹	---	---
8MB	3D: 1024x768x16	Not enabled	4.50MB ¹	6.00MB ¹	---
8MB	3D: 1024x768x16	2D: 1280x1024x16	4.50MB ¹	---	SB: 2.50MB
8MB	2D: 1600x1200x16	2D: 1600x1200x16	SB: 3.66MB	---	SB: 3.66MB
8MB	2D: 1400x1050x16	2D: 1600x1200x16	SB: 2.80MB	---	SB: 3.66MB
16MB	3D: 1600x1200x16	Not enabled	10.98MB ¹	14.64MB ¹	---
16MB	3D: 1400x1050x32	Not enabled	14.02MB ¹	---	---
16MB	3D: 1400x1050x16	Not enabled	8.41MB ¹	11.22MB ¹	---
16MB	3D: 1280x1024x32	Not enabled	15.0MB ²	---	---
16MB	3D: 1280x1024x16	Not enabled	7.50MB ¹	10.00MB ¹	---
16MB	3D: 1600x1200x16	2D: 1600x1200x16	10.99MB ¹	---	SB: 3.66MB
16MB	3D: 1400x1050x16	2D: 1600x1200x16	8.41MB ¹	11.22MB ¹	SB: 3.66MB
16MB	3D: 1280x1024x16	2D: 1600x1200x32	7.50MB ¹	---	SB: 7.32MB
16MB	3D: 1280x1024x16	2D: 1600x1200x16	7.50MB ¹	10.00MB ¹	SB: 3.66MB
16MB	3D: 1024x768x32	2D: 1600x1200x16	9.00MB ²	12.00MB ²	SB: 3.66MB
16MB	3D: 1024x768x32	2D: 1600x1200x32	9.00MB ²	---	SB: 7.32MB

Notes: ¹16-bit Z buffer; ²32-bit Z buffer; SB Single Buffer; CRTC #1 and CRTC #2 can be swapped.

Stromversorgung ATX	ON-LINE USV-Funktion Leistungsfaktorkorrektur
Eingangsspannung	85 – 264 V AC
Eingangsfrequenz	47-63 Hz
Stromaufnahme	4 A (100-120V) / 2A (200-240V)
Überspannungsschutz	+5V (5,6-6,8V) +3.3V (3,76-4,8V)
Ripple	+5V 50mV / +12V 120mV -12V 120 mV / -5V 100mV +3.3 V 50 mV / +5V stand by 100mV
Lastregelung	+5V +/- 5% / +12V +/- 5% -12V +/- 5% / -5V +/- 5% +3,3V +/-5% / +5V stand by +/- 5%
Ausgänge	+3,3V / 0-12A +5V / 1,5 –22A +12V /0-6A -12V / 0-0,8V -5V / 0-0,5A +5V stand by / 750mA
Kurzschlusschutz	an allen Ausgängen
Power Good Signal	Einschaltverzögerung 100-500 ms Auschaltverzögerung 1ms
Überbrückungszeit	3 bis 15min. je nach angeschlossener Last
Batterietyp	24V (2x12V/2,2 Ah) wartungsfreie Bleibatterien Einbau in 5 1/4“ Laufwerksschacht
Batterieladestrom	0,8 A max.
Batterieüberwachung	21,5V +/- 0,5 V Batterie low Schaltpunkt 20,0V +/- 0,5 V Shut down Schaltpunkt
Umgebungstemperatur	0 bis 65 °C
Leistungsrücknahme	50°C bis 65°C –5W/°C
Lagertemperatur	-40°C bis 85°C
Luftfeuchtigkeit	5% bis 95%
Sicherheit	TÜV / UL / cUL
EMV	CE
Abmessung	Netzteil 150 x 140 x 86 mm

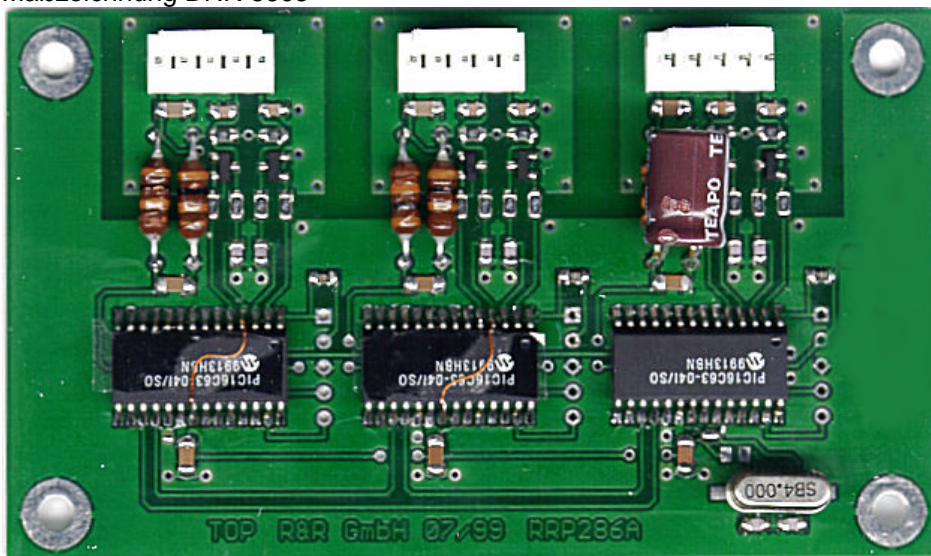
Keyboardweiche RR-P-286-K



Die intelligente Tastatur-Weiche dient zum simultanen Anschluß zweier PS/2 Tastaturen.

Rechner 3 x μ Controller
Anschlüsse 1 x PC-Seite, 2 x Tastatur
Datenblatt siehe DNR 8631
Maßzeichnung DNR 8605

Mausweiche RR-P-286-M



Die intelligente Maus-Weiche dient zum simultanen Anschluß zweier PS/2 Mäuse.

Rechner 3 x μ Controller
Anschlüsse 1 x PC-Seite, 2 x Maus
Datenblatt siehe DNR 9549