



R&R Signal-Converter SC470

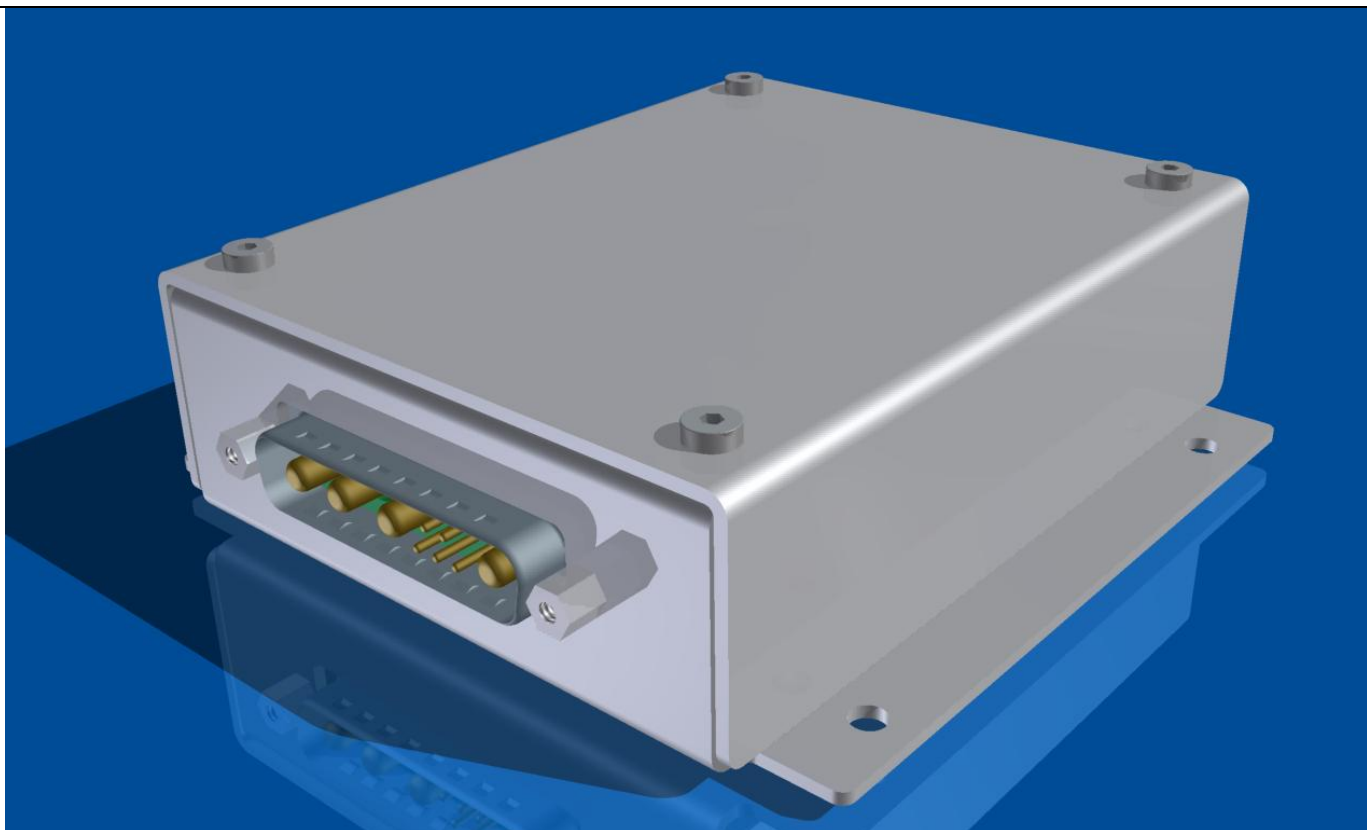
Power supply	+18 up to 34 VDC
size	100 mm x 100 x 32,1 mm
Weight	Approx. 0,18kg
Input	D-SUB combination 9W4
Output	4 x symmetric, 15pin male D-Sub
variant 1	4 channels for video in 75ohm asymmetric, out 100ohm symmetric
variant 2	ch# 1,2, for video in 75ohm asymmetric, out 100ohm symmetric ch# 3,4 for audio in 66kohm asymmetric, out 680ohm symmetric
variant 3	4 channels for audio in 66kohm asymmetric, out 680ohm symmetric
Drawing	DNR 21326



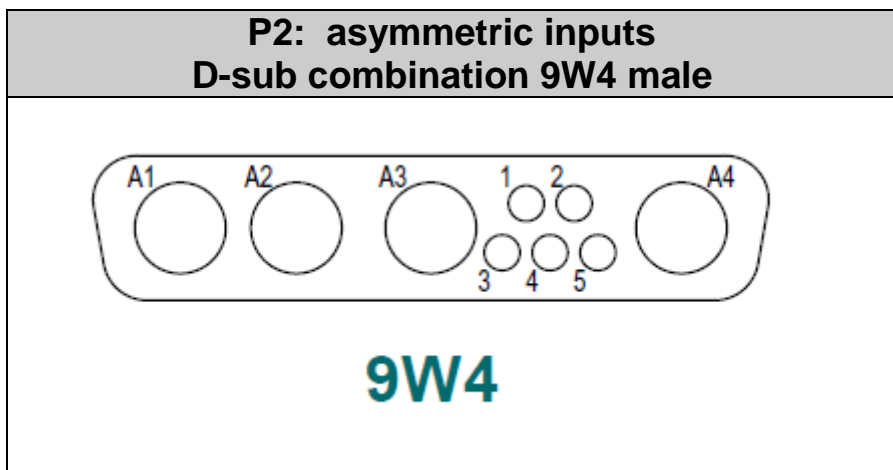
P1: balanced, symmetric outputs 15pin D-sub male		
signal	pin	signal
1 sym+	1	
	9	GND
1 sym-	2	
	10	GND
2 sym+	3	
	11	GND
2 sym-	4	
	12	GND
3 sym+	5	
	13	GND
3 sym-	6	
	14	GND
4 sym+	7	
	15	GND
4 sym-	8	

Mating Connector Video OUT (P1)

P/N DAMA15SNM (ITT Canon) screwlock or equivalent



SCA470 + SCA471



SC470-01	
A1 -> VIDEO 1	PIN 1 -> 28V DC
A2 -> VIDEO 2	PIN 2 -> GND
A3 -> VIDEO 3	PIN 3 -> PE
A4 -> VIDEO 4	PIN 4 -> NC
	PIN 5 -> NC

SC470-02	
A1 -> VIDEO 1	PIN 1 -> 28V DC
A2 -> VIDEO 2	PIN 2 -> GND
A3 -> AUDIO 1	PIN 3 -> PE
A4 -> AUDIO 2	PIN 4 -> NC
	PIN 5 -> NC

SC470-03	
A1 -> AUDIO 1	PIN 1 -> 28V DC
A2 -> AUDIO 2	PIN 2 -> GND
A3 -> AUDIO 3	PIN 3 -> PE
A4 -> AUDIO 4	PIN 4 -> NC
	PIN 5 -> NC

Mating Connector Video IN, Power (P2) P/N DBM9W4SA197 (ITT Canon) screwlock or equivalent